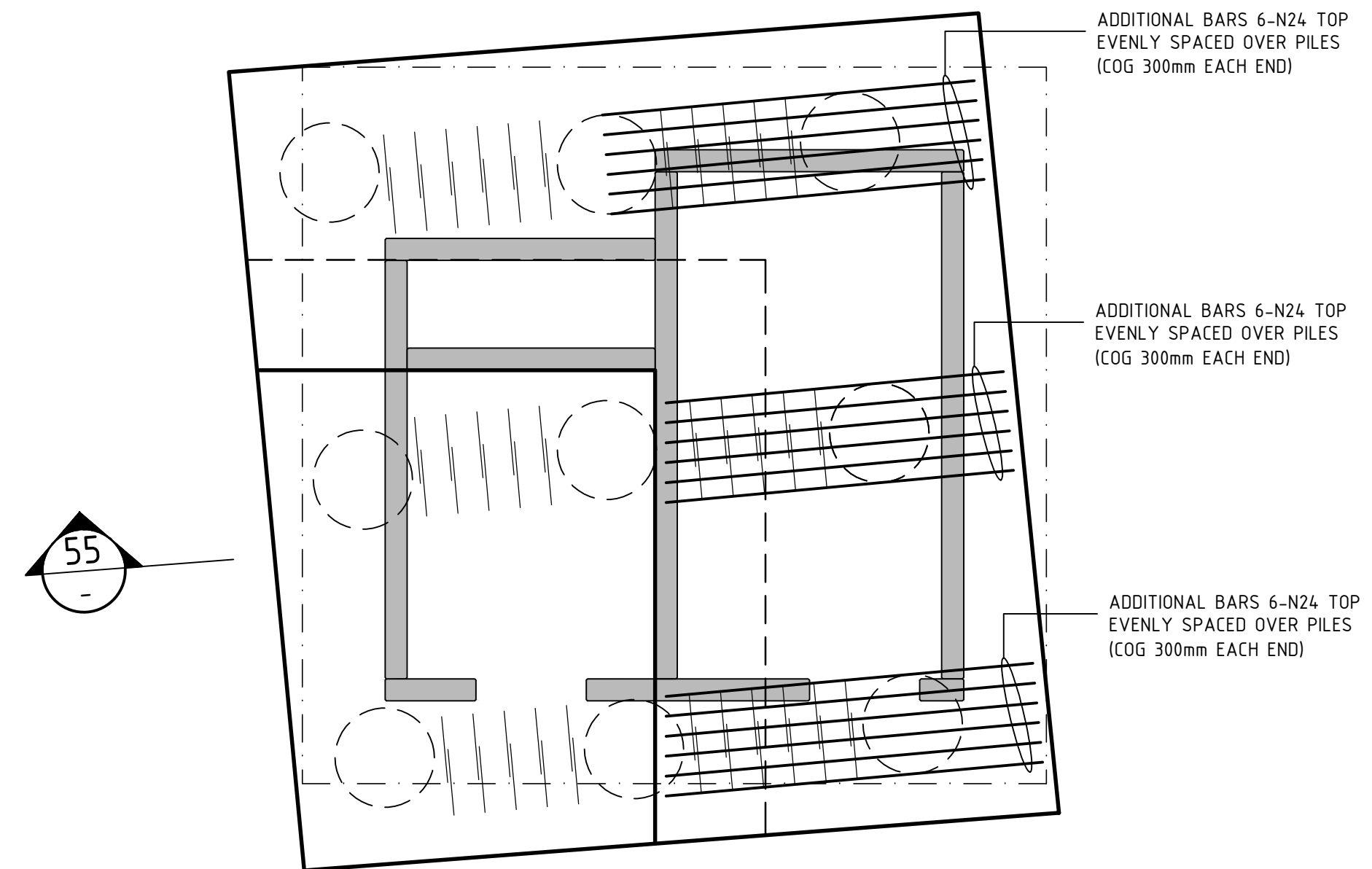
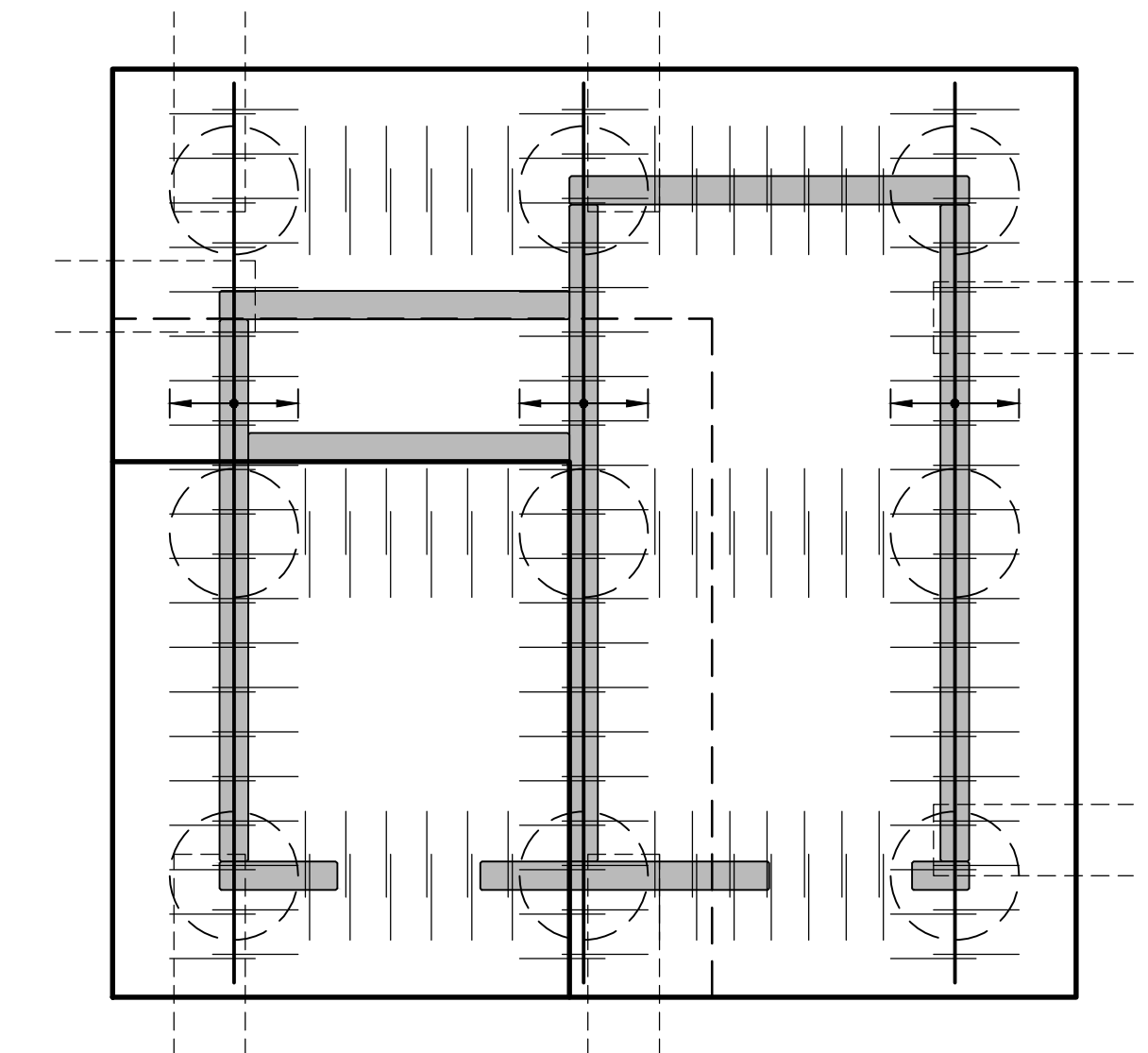


1:50
REINFORCEMENT IN NORTH - SOUTH DIRECTION

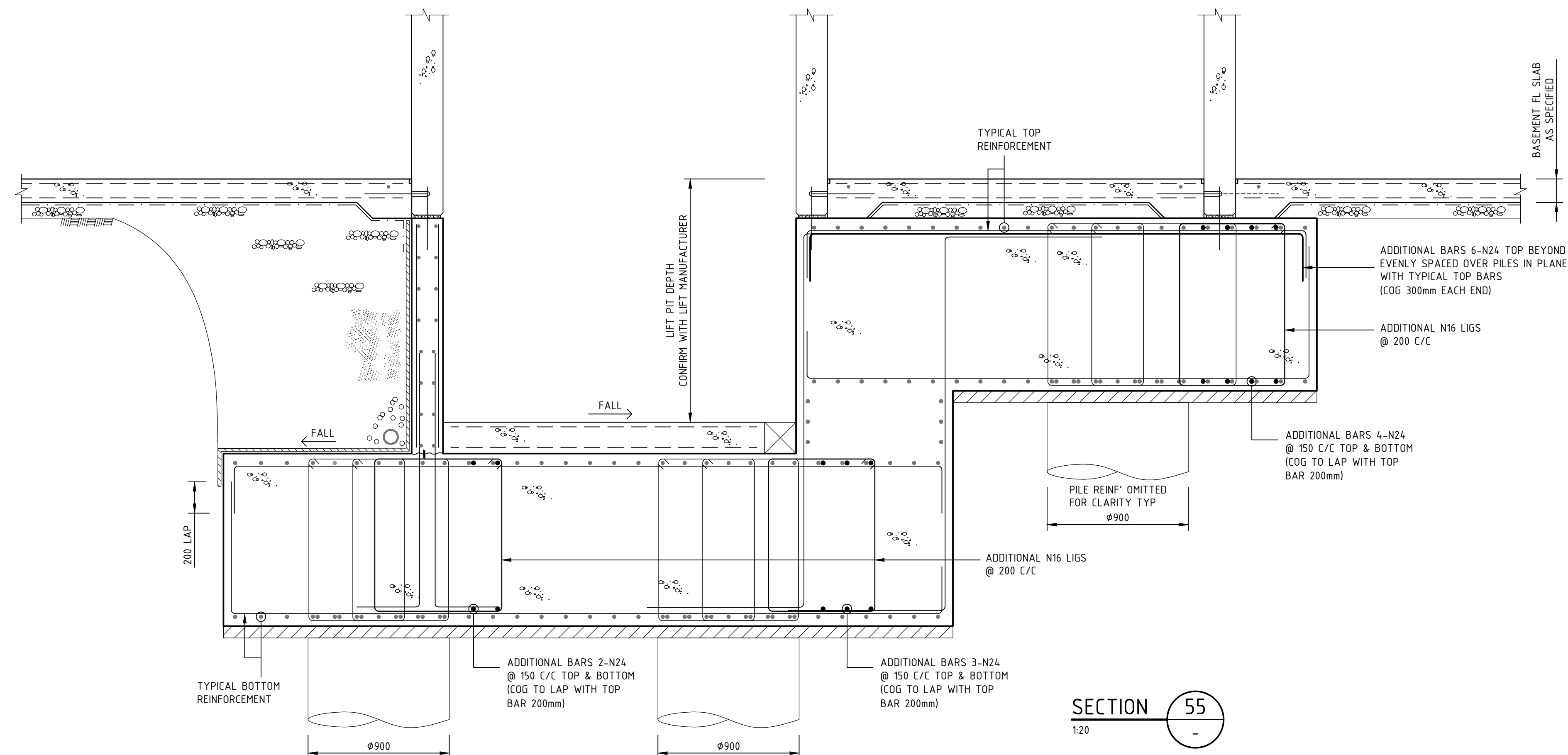
REFER TO DRAWING S402 FOR TYPICAL ENGINEERING SPECIFICATIONS AND REQUIREMENTS FOR PILECAP PC5. INFORMATION AND REQUIREMENTS SHOWN ON THIS SHEET ARE ADDITIONAL.



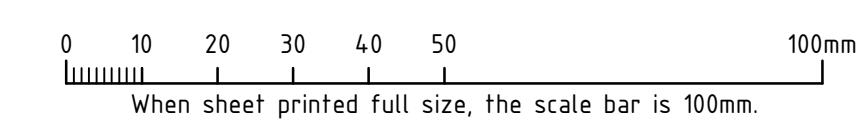
1:50
REINFORCEMENT IN EAST - WEST DIRECTION




1:50
NOTE:
PROVIDED FOR INFORMATION ONLY



SECTION 55



AA	PILECAP PC5 REMEDIATION DRAWING		DG	FK	22.02.19
No	REVISION		DRAWN	CHE'KD	DATE
PROJECT					
<p>THE WILLCOX APARTMENTS</p> <p>AT: 117 PROSPECT ROAD</p> <p>PROSPECT, SA 5082</p> <p>FOR: CITIFY & BFC PTY LTD</p>					
DRAWING TITLE					
PILECAP PC5 REMEDIATION PLAN & DETAIL					
<div> <div> <p>Civil Environmental Mechanical Fire Lifts</p> </div> <div> <p>Structural Geotechnical Electrical Hydraulics Green ASD</p> </div> <div>  </div> </div> <p>Level 6, 100 Pirie Street, Adelaide SA 5000 Telephone 08 8238 4100 Facsimile 08 8410 1405</p>					
SCALES AS SHOWN			© COPYRIGHT RESERVED		
DRAWN DG			DRAWING No.		
DATE APRIL 2018			1802052-S417/AA		
ENGINEER FK					
CHECKED					